

The procedures for updating the main board firmware

Step 1: Connect the unit and the computer by a USB cable



Figure 1

Step 2: Check USB device you are using in Computer management >> Device manage >> Human interface devices>>HID-compliant device.

Note: Make sure all application communication software using this USB port is closed. The application software include some UPS monitoring software.

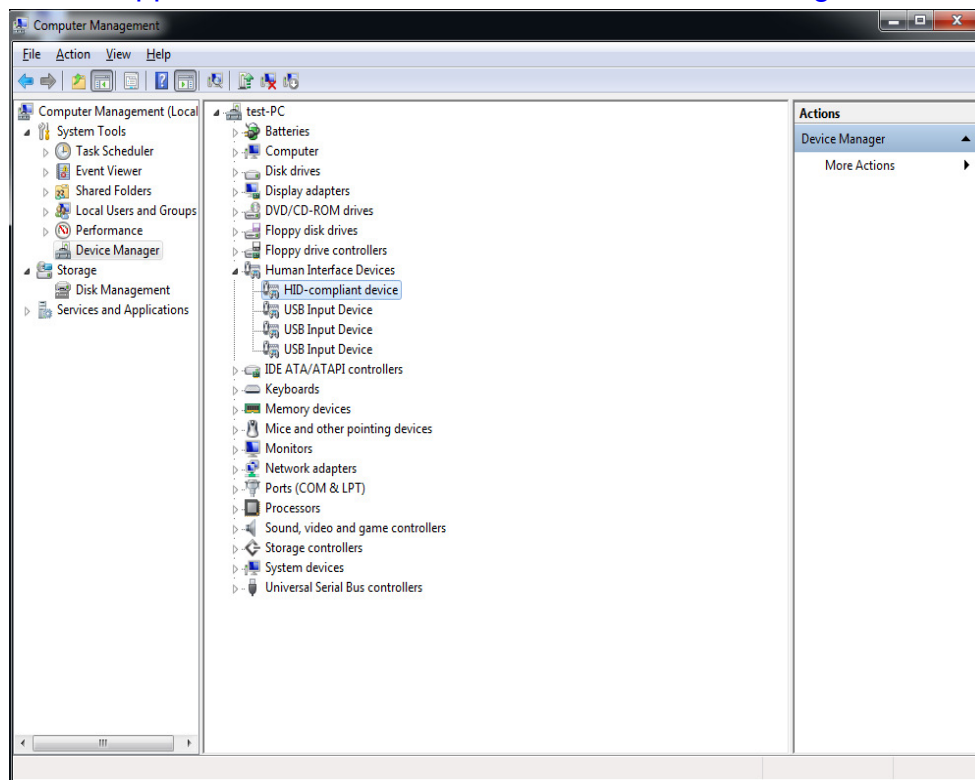


Figure 2

Step 3: Connect the DC power or battery (must be more than start up voltage, i.e. >11.5V for 12V model, >23.0V for 24V model and >46.0V for 48V model) to the battery connector, then turn on the inverter.

Step 4: Execute “InvReflashTool.exe” in computer.

Step 5: Click interface check box and select the USB port.

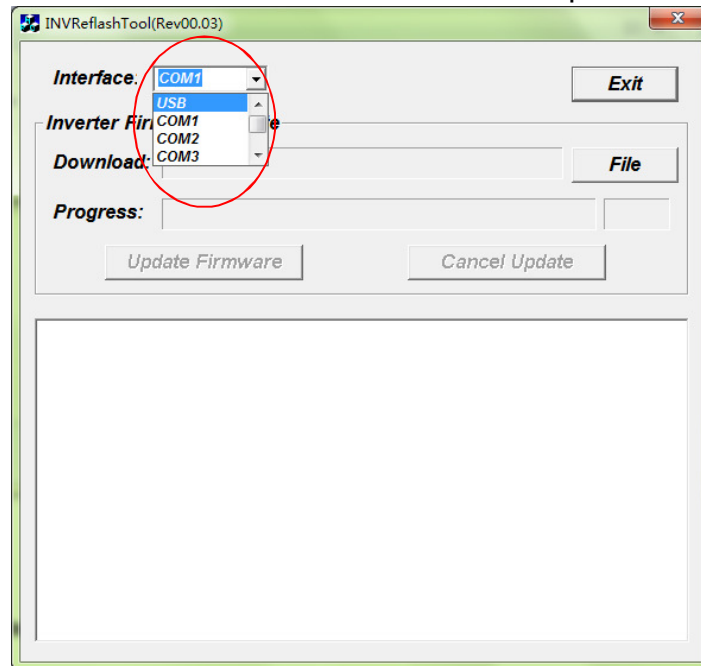


Figure 3

Step 6: Click **File** button to select the firmware file.

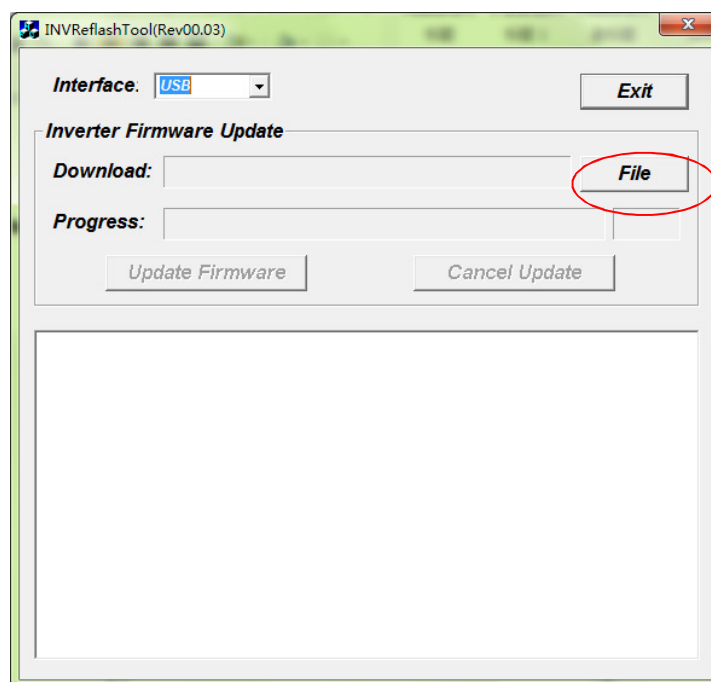


Figure 4

Select the firmware file, by double clicking it ('Verxxxx' is the version of the firmware, 'x' is the number from 0~9, example: Ver0615).

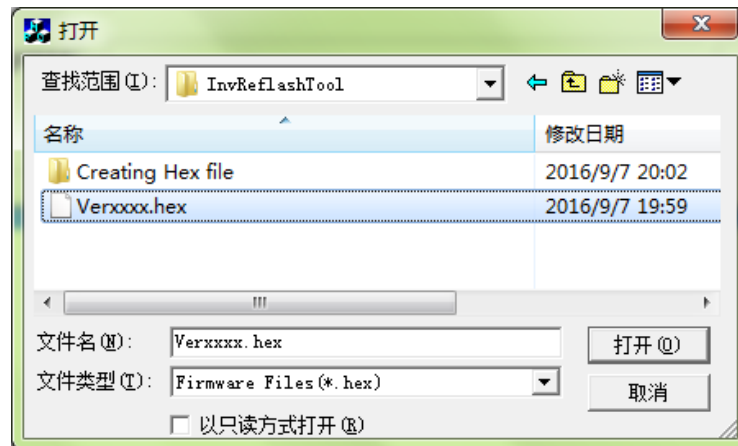


Figure 5

Step 7: Click Update Firmware button to start firmware update

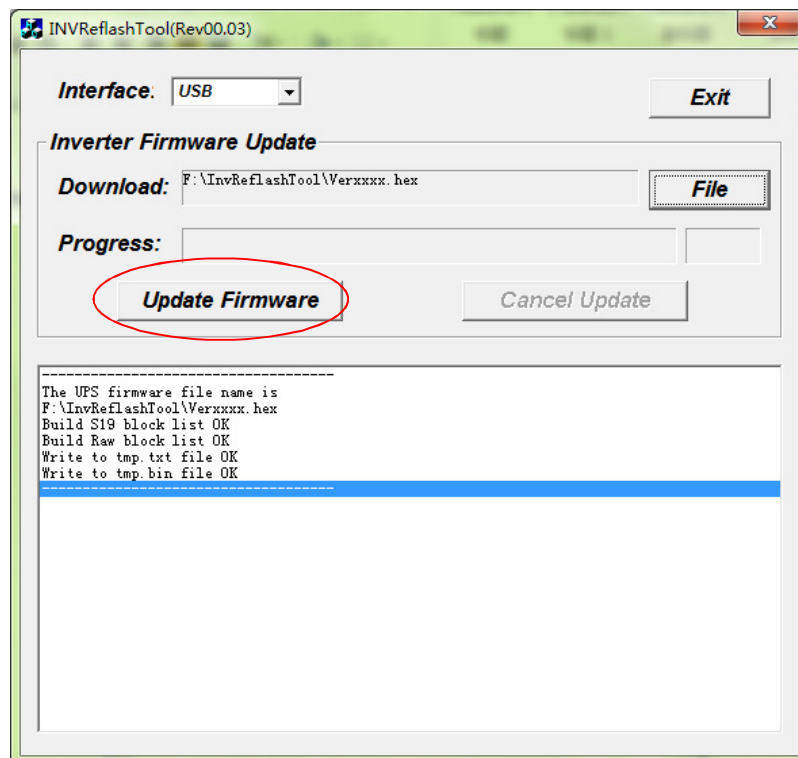


Figure 6

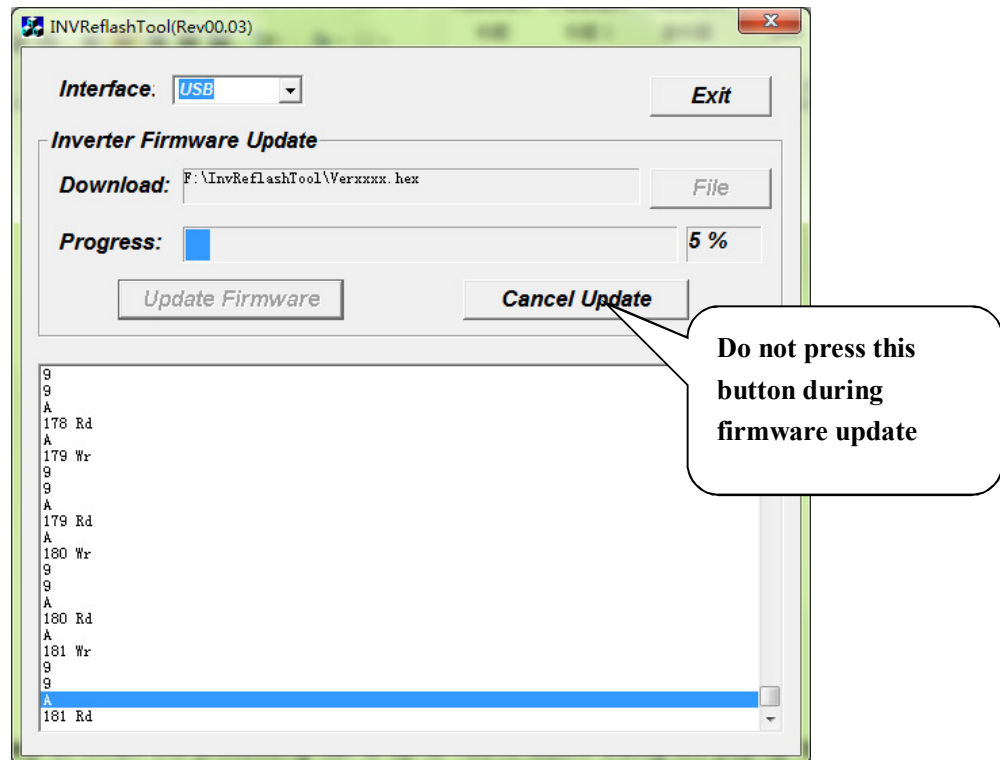


Figure 7

Step 8: When the processing bar is up to 100%, below dialog will pop-up to remind you the programming is successful! Now the firmware of the main board is updated completely!

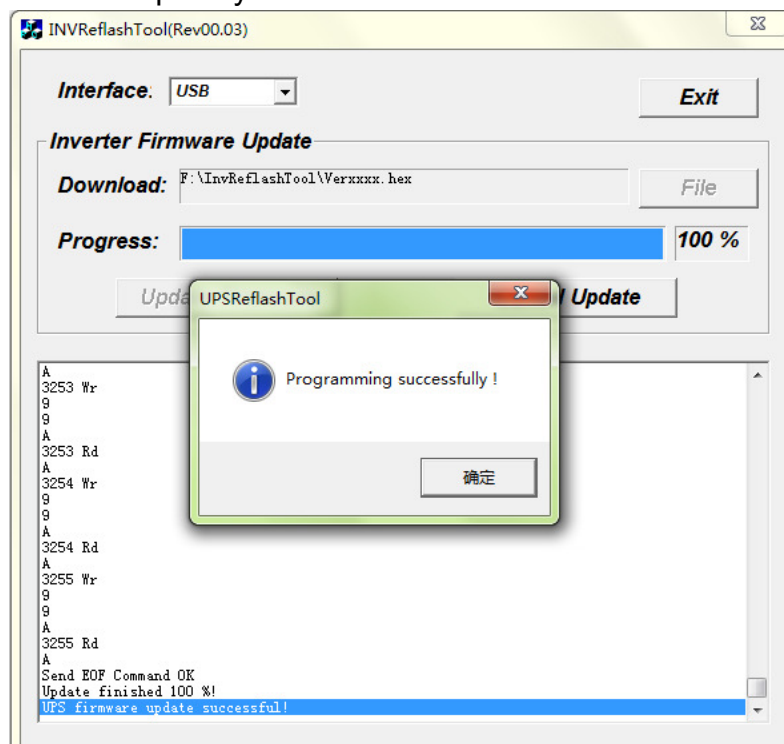


Figure 8

Notes:

1. If you need to update another inverter, don't close "InvReflashTool.exe", and restart from Step 3.
2. If below error appears in step 7, please check the connection cable between computer and inverter, and check USB device refer to step 2. Then close "InvReflashTool.exe", and restart from step 5.

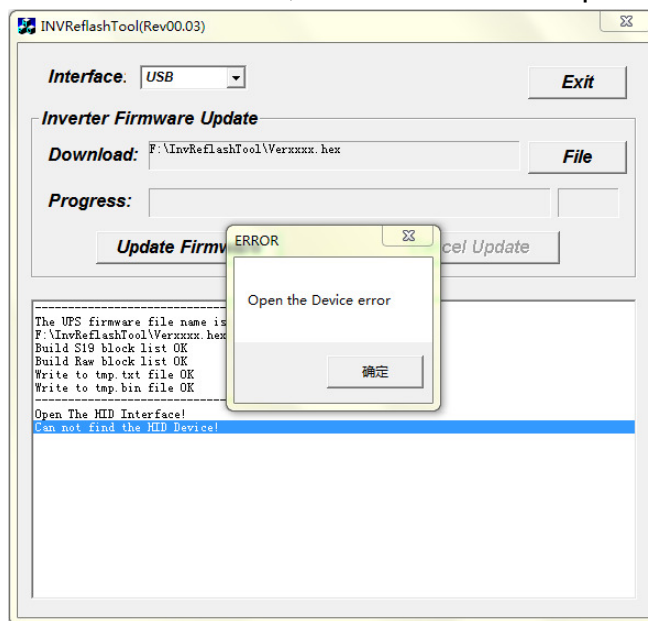


Figure 9

3. If below error appears before step 8, "read data Err" or "write UPS error" means programming fail. This may because of communication between inverter and computer break in programming. Please close "InvReflashTool.exe", remove the DC power or battery from the battery connector, and then restart from step 2.

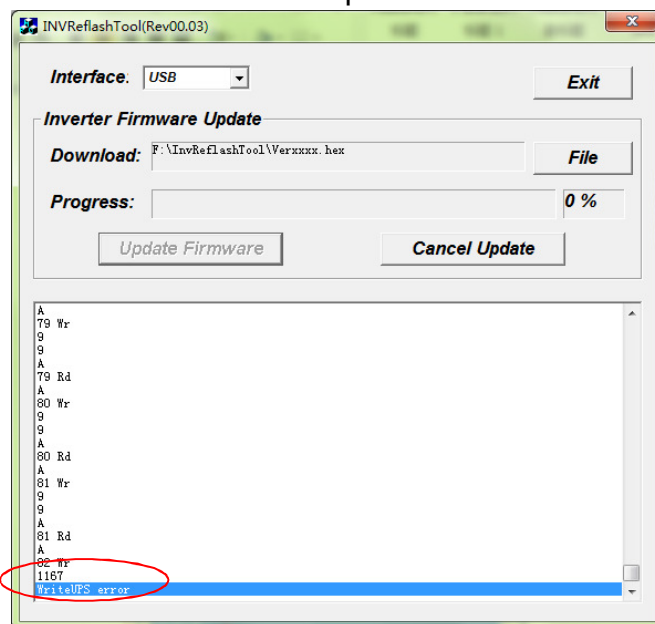


Figure 10